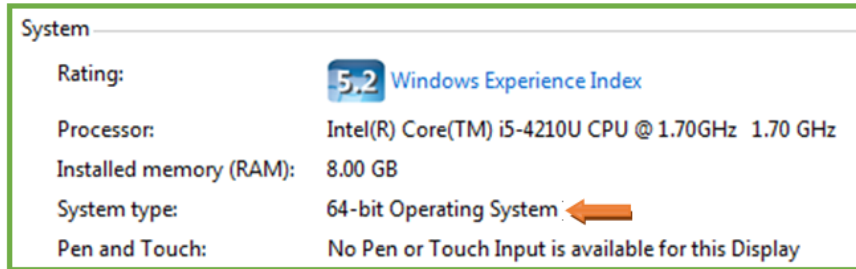


Install VMware: Remote Access to EPIC & the LCMC Health Network

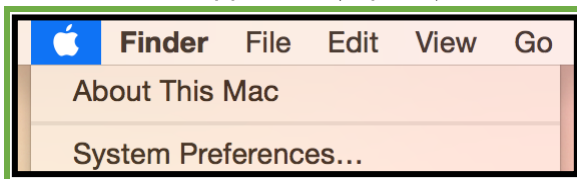
IN ORDER TO ACCESS EPIC REMOTELY, VMWARE CLIENT MUST FIRST BE INSTALLED ON THE COMPUTER TO BE USED.

ANY ISSUES INSTALLING/USING VMWARE, PLEASE CALL THE HELP DESK: [702-HELP \(4357\)](tel:702-HELP(4357)).

- 1) Verify your Operating System version:
 - a) Windows (32-bit or 64-bit):
 - i) Open the Control Panel
 - ii) Double Click on the SYSTEM hyperlink



- b) MAC OS
 - i) Hover over the Apple icon (top left). Select **ABOUT THIS MAC**.



- 2) Click [here](#) to download VMware Horizon Client. From the row of the matching Operating System (see in the Product column) select the **GO TO DOWNLOADS** hyperlink. **RUN**.

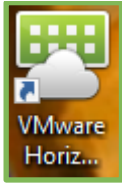
Complete VMware URL if needed to copy/paste into browser:

https://my.vmware.com/web/vmware/info/slug/desktop_end_user_computing/vmware_horizon_clients/3_0

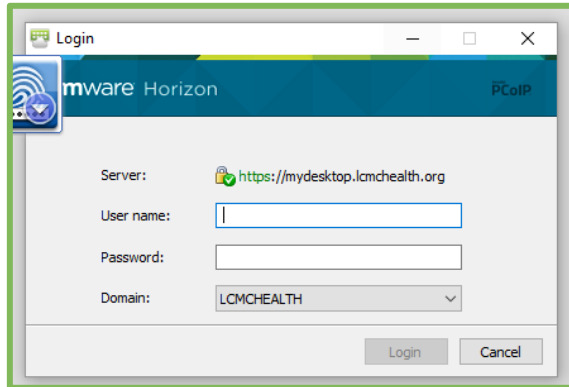
Product	Release Date
VMware Horizon Client for Windows	
VMware Horizon Client for 32-bit Windows	2015-10-15 Go to Downloads
VMware Horizon Client for 64-bit Windows	2015-10-15 Go to Downloads

- 3) Follow all prompts accepting all defaults.
- 4) When prompted for **Default View Connection Server**, enter: **mydesktop.lcmchealth.org**
- 5) Continue to accept all defaults. When complete, restart your computer.

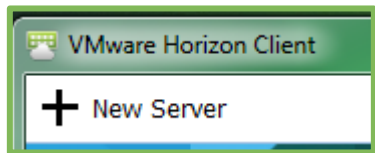
- 6) On your desktop will be the VMware Horizon icon.



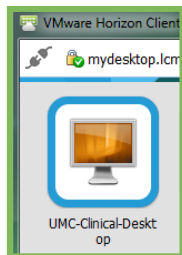
- 7) Login using your LCMC Health User ID & Password.



- 8) If you forgot to enter the default server when installing VMware, select **+New Server**. Enter or copy/paste: **mydesktop.lcmhealth.org**. Otherwise, skip to step 9.



- 9) Select **UMC-Clinical-Desktop** icon. Your virtual desktop will load.



- 10) Select the EPIC production icon and login to EPIC with your EPIC User ID & LCMC Password.

After VMware has Been Installed

- 1) Login to the LCMC Desktop remotely by selecting the VMware icon.

OR

- 2) From the UMCNO website → For Medical Professionals hyperlink, scroll down to the EPIC Hyperspace hyperlink & select. Login with your LCMC User ID and LCMC Password.



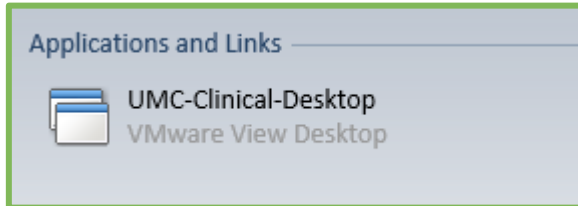
Secure Logon
for F5 Networks

Username

Password

Logon

- 3) Select the Desktop UMC-Clinical-Desktop link.



- 3) Select the EPIC icon & login to EPIC with your EPIC User ID & LCMC Password.